

# COLLECTION

HIVER 2024



CAMBRIDGE  
— LEGEND —



# INSTANTS PRÉCIEUX

Dans une vie d'homme, il y a un temps pour tout. Pour flâner, pour partager, pour l'introspection, pour rire. Pour chacun de ces instants fugaces mais essentiels, il y a un vêtement, celui dans lequel il se sent bien, celui qui révèle son charme, quelle que soit la circonstance.

Precious moments

There's a time for everything in a man's life. A time to share and a time to relax, a time to think and a time to laugh. And for each of these fleeting, though essential, moments, there is a garment in which he feels at ease, a garment that reveals his charm, whatever the occasion.











**SAVOIR SE  
RETROUVER**

Time for yourself





# INSTANTS PARTAGÉES

Shared times



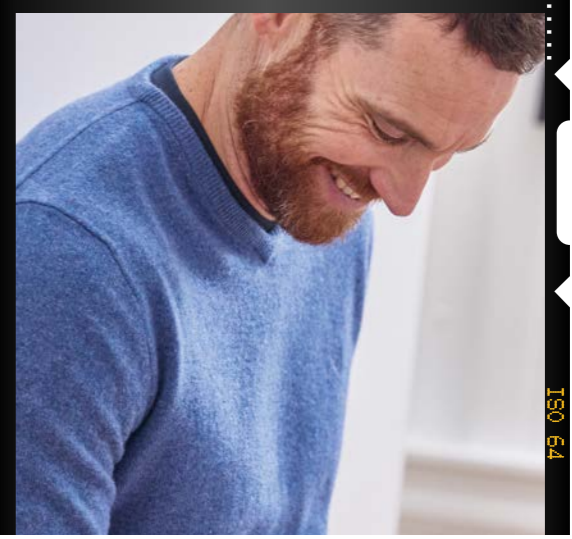
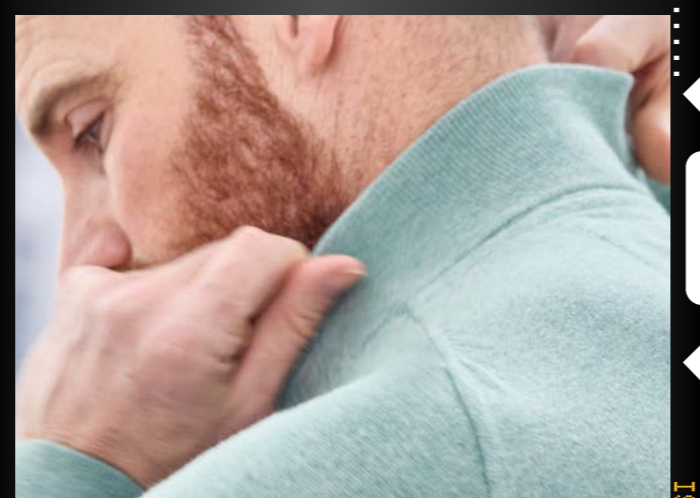
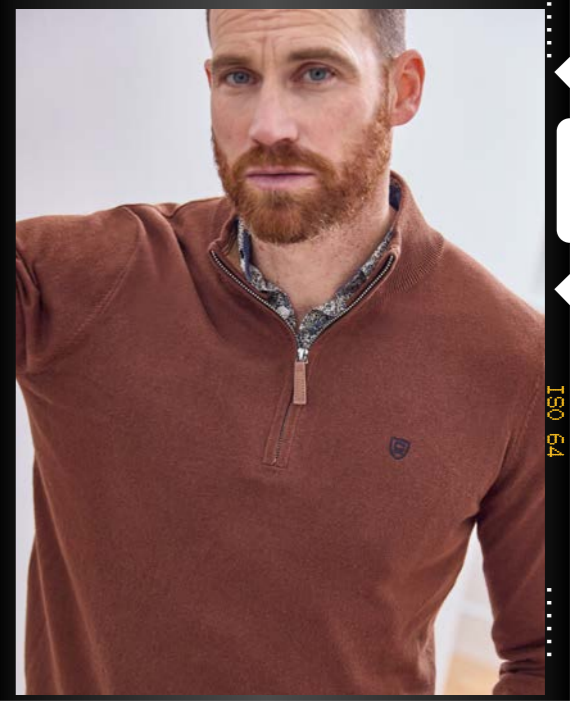
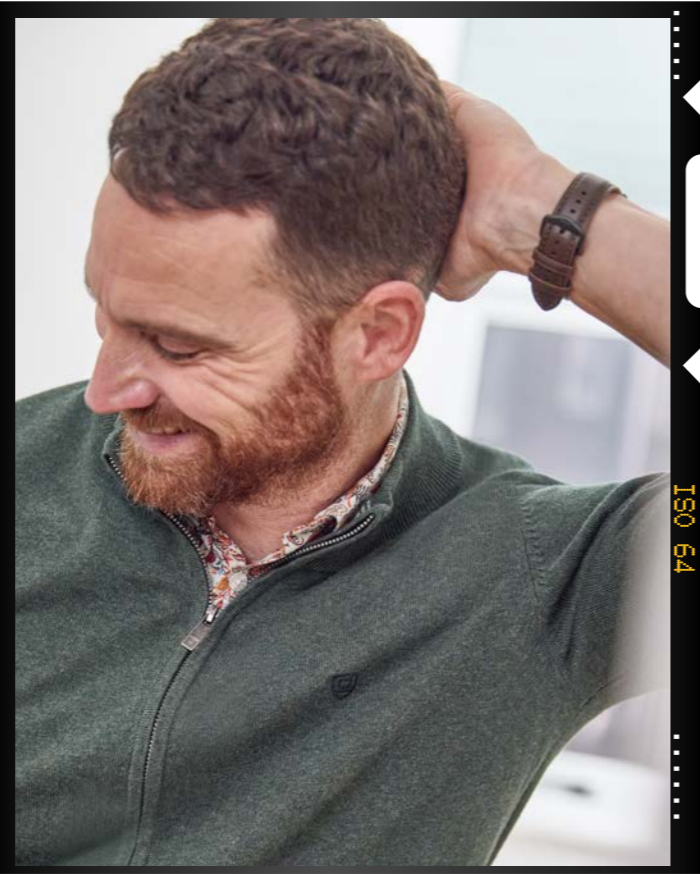
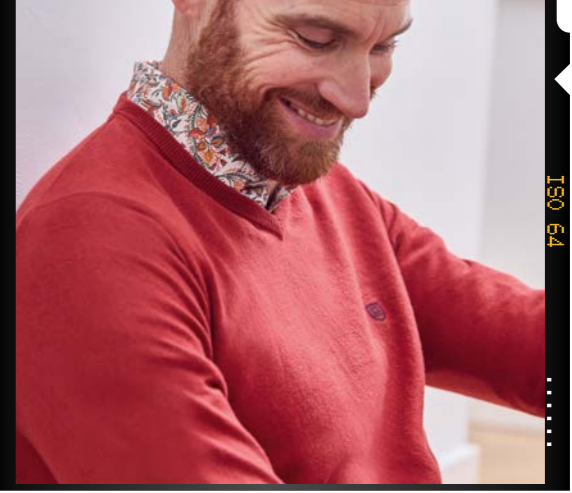


SWEET  
S



**PLAY  
TIME**





# MOMENTS DE FOLIE DOUCE

Carefree moments





• COUVERTURE - CHEMISE CHICAGO 64CG1CS101 BLEU - SWEAT WINDSOR 64CG1SW101 WATER - JEAN JAGGER 64CG1JE100 STONE • P3 - PULL EAGAN 64CG1PU101 SAUGE - BLOUSON SUR CHEMISE BABYLONE 64CG1PB201 MARINE - PANTALON PANTFIT 63CG1PS001 VERT KAKI • P4/5 - CHEMISE CHARLESTON 64CG1CS202 MARINE - PARKA BAHREIN 64CG1PB202 MARINE - PANTALON PANTFIT 64CG1PS001 CHOCO • P6/7 - SWEAT WASHINGTON 64CG1SW200 MARINE - CHEMISE CASSEL 64CG1CS001 GRENAT - JEAN JAGGER 64CG1JE100 STONE - ECHARPE ATTALIA 64CG1AC200 MARINE/GRENAT • P8/9 - CHEMISE COLOMBUS 64CG1CS102 BLANC - GILET GAP 64CG1GI200 BLEU DENIM - PARKA BASEL 64CG1PB300 BRIQUE - PANTALON PANTFIT 64CG1PS001 ORAGE - CASQUETTE ANDERSON 64CG1AT000 BEIGE • P10 - CHEMISE CLARKSVILLE 64CG1CS301 MARINE - POLO NORFOLK 64CG1PO300 BLEU DENIM • P11 - CHEMISE CHERYHILL 64CG1CS304 GRIS ANTHRACITE - GILET GEORGETOWN 64CG1GI300 GRIS ANTHRACITE - PANTALON PMARTIN 64CG1PS000 BRIQUE • P12/13 - CHEMISE CLEVELAND 64CG1CS103 BLANC - PULL EVEREST 64CG1PU300 ORAGE - PANTALON PANTFIT 64CG1PS001 MARINE • P14/15 - TSHIRT TEXAS 64CG1TS000 BLANC - PULL EDISON 64CG1PU100 WATER - BLOUSON BOSTON 64CG1PB100 BEIGE - PANTALON PANTFIT 64CG1PS001 MARINE - BONNET ANCHORAGE 64CG1AT002 MARINE • P16/17 - PULL ETIOLLES 64CG1PU102 MASTIC - PANTALON PMARTIN 64CG1PS000 ORAGE - CUIR LONDON 64CG1CP200 MARRON - ECHARPE ARIZONA 64CG1AC301 GRIS ANTHRA • P18/19 - CHEMISE COLORADO 64CG1CS203 GRENAT - PULL ETALLES 64CG1PU004 GRENAT - JEAN JAGGER 64CG1JE100 BLUE BLACK - DOUDOUNE BERMUDE 64CG1PB200 MARINE • P20 - CHEMISE CLIFTON 64CG1CS305 GRIS ANTHRACITE • P21 - CHEMISE CLIFTON 64CG1CS305 GRIS ANTHRACITE - VESTE VENISE 64CG1VE300 COGNAC - PANTALON PANTFIT 64CG1PS001 GRIS ANTHRACITE • P22 - CHEMISE CHAMBERY 64CG1CS300 BISCUIT - CHEMISE CLEARWATER 64CG1CS302 BRIQUE - PULL ESCALA 64CG1PU002 SAUGE - GILET GURY 64CG1GI000 VERT KAKI - CHEMISE CORNING 64CG1CS200 CHOCO • P23 - GILET GURY 64CG1GI000 VERT KAKI - PULL ELVEN 64CG1PU000 ACAJOU - CHEMISE CHAMBERY 64CG1CS300 ORAGE - PULL ESCALA 64CG1PU002 NOISETTE - PULL ECLANCE 64CG1PU003 CAMEL - PULL EDON 64CG1PU001 WATER • P24/25 - CHEMISE CAMDEN 64CG1CS201 BLANC - VESTE BLAZE 61CG1VE000 MARINE - PANTALON PANTFIT 64CG1PS001 BEIGE • P26 - CHEMISE CONCORD 64CG1CS204 GRENAT - PARDESSUS BULGARIE 64CG1PB101 MARINE - PANTALON PANTFIT 64CG1PS001 GRENAT • DERNIERE DE COUV - PULL ETIOLLES 64CG1PU102 MASTIC - PANTALON PMARTIN 64CG1PS000 ORAGE - CUIR LONDON 64CG1CP200 MARRON - ECHARPE ARIZONA 64CG1AC301 GRIS ANTHRA



Conception et réalisation DPS  
Crédit photos : Greg Verhaeghe - Photographies retouchées.



**CAMBRIDGE**  
— LEGEND —

[cambridge-legend.com](http://cambridge-legend.com)



Distributed by **Aster Mod**

21, RUE DE L'INDUSTRIE - ZONE INDUSTRIELLE - 67720 HOERDT - FRANCE  
TEL : +33 (0)3 88 69 20 11 - CONTACT : [COMMERCIAL@ASTERMOD.COM](mailto:COMMERCIAL@ASTERMOD.COM)



SAS au capital de 2,652,777 € dont le siège est à HOERDT (67720) 21 rue de l'Industrie Zone industrielle FCS STRASBOURG 698 503 372